

F U L L   A C C E S S   C O L L E C T I O N



Waste Containers.....	4
Sink.....	14
Base .....	18
Blind Corner .....	30
Tall.....	36
Drawer .....	40
Lazy Susan .....	48
LED Lighting .....	51



F U L L   A C C E S S   C O L L E C T I O N

# LEGRABOX FULL ACCESS SIDE MOUNT WASTE CONTAINERS

The style possibilities are limitless with Rev-A-Shelf's LEGRABOX. Designed for full access 12", 15" and 18" base cabinets with 3/4" side panels, the LEGRABOX frame comes fully assembled in two configurations: orion gray with a walnut satin finish insert or stainless steel with a painted black MDF insert. It features full-extension, concealed slides with BLUMOTION soft-close and could be used with TIP-ON or SERVO-DRIVE systems.



Stainless steel LEGRABOX with black insert and black container



Orion gray LEGRABOX with walnut insert and orion gray container



PRODUCT #	DESCRIPTION	PRODUCT DIMENSIONS	FINISH	SUGGESTED LIST PRICE
LEGRABOX Full Access Side Mount Waste Container Pullouts w/ BLUMOTION Soft-Close				
5LB-1230OGWN-113	Single 30 qt. for 12" Base Cabinet	10-1/2" (266 mm) W x 21-3/4" (552 mm) D x 19-5/8" (498 mm) H	Orion Gray/ Walnut	\$472.70
5LB-1230SSBL-118	Single 30 qt. for 12" Base Cabinet	10-1/2" (266 mm) W x 21-3/4" (552 mm) D x 19-5/8" (498 mm) H	Stainless Steel/ Black	\$542.30
5LB-1535OGWN-113	Single 35 qt. for 15" Base Cabinet	13-1/2" (343 mm) W x 21-3/4" (552 mm) D x 20-3/8" (518 mm) H	Orion Gray/ Walnut	\$499.65
5LB-1535SSBL-118	Single 35 qt. for 15" Base Cabinet	13-1/2" (343 mm) W x 21-3/4" (552 mm) D x 20-3/8" (518 mm) H	Stainless Steel/ Black	\$572.15
5LB-1550OGWN-113	Single 50 qt. for 15" Base Cabinet	13-1/2" (343 mm) W x 21-3/4" (552 mm) D x 24-1/4" (616 mm) H	Orion Gray/ Walnut	\$505.20
5LB-1550SSBL-118	Single 50 qt. for 15" Base Cabinet	13-1/2" (343 mm) W x 21-3/4" (552 mm) D x 24-1/4" (616 mm) H	Stainless Steel/ Black	\$574.80
5LB-1835OGWN-213	Double 35 qt. for 18" Base Cabinet	16-1/2" (419 mm) W x 21-3/4" (552 mm) D x 20-3/8" (518 mm) H	Orion Gray/ Walnut	\$504.90
5LB-1835SSBL-218	Double 35 qt. for 18" Base Cabinet	16-1/2" (419 mm) W x 21-3/4" (552 mm) D x 20-3/8" (518 mm) H	Stainless Steel/ Black	\$572.90
5LB-1850OGWN-213	Double 50 qt. for 18" Base Cabinet	16-1/2" (419 mm) W x 21-3/4" (552 mm) D x 24-1/4" (616 mm) H	Orion Gray/ Walnut	\$513.75
5LB-1850SSBL-218	Double 50 qt. for 18" Base Cabinet	16-1/2" (419 mm) W x 21-3/4" (552 mm) D x 24-1/4" (616 mm) H	Stainless Steel/ Black	\$578.10
LEGRABOX TIP-ON Kit				
5LB-TOKIT-12	TIP-ON Kit for 12" Base Cabinet	3-1/2" (89 mm) W x 9" (229 mm) D x 1-3/4" (44 mm) H		\$62.65
5LB-TOKIT-15	TIP-ON Kit for 15" Base Cabinet	3-1/2" (89 mm) W x 9" (229 mm) D x 1-3/4" (44 mm) H		\$65.10
5LB-TOKIT-18	TIP-ON Kit for 18" Base Cabinet	3-1/2" (89 mm) W x 9" (229 mm) D x 1-3/4" (44 mm) H		\$65.10
LEGRABOX SERVO-DRIVE Kit				
5LBSD-KIT-1	SERVO-DRIVE Kit			\$542.90



5LB-1835OGWN-213

# STEEL TOP MOUNT WASTE & RECYCLE CENTERS

Our 53TM Series was crafted with convenience and style in mind. Designed for full access 18", 24", 450 mm, and 600 mm base cabinets with 5/8", 3/4", 15 mm, and 18 mm side walls, this series features several configurations to fit your exact needs: double 35 or 50 qt. waste containers or 8 qt. containers for compost paired with either single or double 35 qt. waste containers. This pullout features a sleek built-in metal lid, full-extension with 1-1/2" over-travel, Grass, 90 lb. rated slides with soft-close, and pre-assembled door mount brackets.



Pre-assembled door mount brackets



Four waste management configurations available



Built-in metal lid

PRODUCT #	DESCRIPTION	PRODUCT DIMENSIONS	SUGGESTED LIST PRICE
Steel Top Mount Waste Container Pullouts			
53TM-1835GSCDM2-FL	Double 35 qt. for 18" Base Cabinet	16-7/32" (412 mm) - 16-27/32" (428 mm) W x 21-11/16" (550 mm) D x 23" (584 mm) H	\$354.40
53TM-1850GSCDM2-FL	Double 50 qt. for 18" Base Cabinet	16-7/32" (412 mm) - 16-27/32" (428 mm) W x 21-11/16" (550 mm) D x 23" (584 mm) H	\$394.40
53TM-18GSCDM3-FL	Single 35 qt. and Double 8 qt. for 18" Base Cabinet	16-7/32" (412 mm) - 16-27/32" (428 mm) W x 21-11/16" (550 mm) D x 23" (584 mm) H	\$384.85
53TM-24GSCDM4-FL	Double 35 qt. and Double 8 qt. for 18" Base Cabinet	22-1/8" (536 mm) - 22-3/4" (578 mm) W x 21-11/16" (550 mm) D x 23" (584 mm) H	\$412.55





53TM-1850GSCDM2-FL

# WALNUT BOTTOM MOUNT MOVENTO WASTE CONTAINERS

Designed for full access 15" and 18" base cabinets, our 4WC-WN Series provides the perfect solution for your kitchen needs. Orion gray containers paired with a walnut dovetail frame that glide on full-extension with 3/4" over-travel, MOVENTO, 132 lb. rated, concealed slides with BLUMOTION soft-close. Pre-assembled door mount brackets and one matching lid included with TIP-ON technology available.



Pre-assembled door mount brackets



MOVENTO over-travel slides



PRODUCT #	DESCRIPTION	PRODUCT DIMENSIONS	SUGGESTED LIST PRICE
Walnut Bottom Mount MOVENTO Waste Container Pullouts w/ BLUMOTION Soft-Close			
4WC-WN-15DM1-SC	Single 35 qt. for 15" Base Cabinet	12" (305 mm) W x 22-1/8" (562 mm) D x 19-1/4" (489 mm) H	\$482.85
4WC-WN-1550DM1-SC	Single 50 qt. for 15" Base Cabinet	12" (305 mm) W x 22-1/8" (562 mm) D x 23-3/8" (593 mm) H	\$486.35
4WC-WN-18DM2-SC	Double 35 qt. for 18" Base Cabinet	15" (381 mm) W x 22-1/8" (562 mm) D x 19-1/4" (489 mm) H	\$483.00
4WC-WN-2150DM2-SC	Double 50 qt. for 21" Base Cabinet	18" (458 mm) W x 22-1/8" (562 mm) D x 23-3/8" (593 mm) H	\$486.50





4WC-WN-18DM2-SC

# WALNUT TOP MOUNT REV-A-MOTION™ WASTE CONTAINERS

Designed for full access 18" and 21" base cabinets, our 4WCTM-WNRM Series offers a walnut dovetail frame that glides on full-extension with 1-1/2" over-travel, ball-bearing, 150 lb. rated, concealed slides with Rev-A-Motion™ soft-open/soft-close. It features single or double 50 qt. polymer containers in orion gray, rear adjustable mounting brackets and pre-assembled door mount brackets. Matching lids available (sold separately).



Single and double 50 qt. containers



Rev-A-Motion™ soft-open/soft-close  
(US Patent No. 8,297,722)



PRODUCT #	DESCRIPTION	PRODUCT DIMENSIONS	SUGGESTED LIST PRICE
Walnut Top Mount Rev-A-Motion™ Waste Container Pullouts			
4WCTM-WNRM-1850DM-1	Single 50 qt. for 18" Base Cabinet	15-1/4" (388 mm) W x 21-3/4" (552 mm) D x 24-3/4" (629 mm) H	\$483.45
4WCTM-WNRM-2150DM-2	Double 50 qt for 21" Base Cabinet	18-1/4" (464 mm) W x 21-3/4" (552 mm) D x 24-3/4" (629 mm) H	\$487.35



4WCTM-WNRM-2150DM-2

# MAPLE TOP MOUNT WASTE CONTAINERS

Our 4WCTM Series is designed with durability in mind. Available in a multitude of sizes, this series features a maple dovetail frame that glides on full-extension with 1-1/2" over-travel, ball-bearing, 140 lb. rated slides and includes pre-assembled door mount brackets and rear adjustable mounting brackets. All single units feature additional rear storage and all single and double units include one matching lid.



Full-extension with 1-1/2" over-travel, ball-bearing, 150 lb. rated slides



Patented pre-assembled door mount brackets  
(US Patent No. 6,390,576)

Can be ordered with soft-close slides

PRODUCT #	DESCRIPTION	PRODUCT DIMENSIONS	FINISH	SUGGESTED LIST PRICE
Maple Top Mount Waste Container Pullouts				
4WCTM-12DM1-343-FL	Single 35 qt. for 12" Base Cabinet	13-1/2" (343 mm) W x 22-3/4" (578 mm) D x 17-7/8" (454 mm) H	White/Maple	\$147.30
4WCTM-1550DM1-343-FL	Single 50 qt. for 15" Base Cabinet	13-1/2" (343 mm) W x 23-1/4" (591 mm) D x 21-3/4" (553 mm) H	White/Maple	\$155.60
4WCTM-15DM2-343-FL	Double 27 qt. for 15" Base Cabinet	13-1/2" (343 mm) W x 23-1/4" (591 mm) D x 17-3/4" (451 mm) H	White/Maple	\$180.25
4WCTM-18DM2-419-FL	Double 35 qt. for 18" Base Cabinet	16-1/2" (419 mm) W x 22-3/4" (578 mm) D x 17-7/8" (454 mm) H	White/Maple	\$180.80
4WCTM-1850DM2-419-FL	Double 50 qt. for 18" Base Cabinet	16-1/2" (419 mm) W x 23-1/4" (591 mm) D x 21-3/4" (553 mm) H	White/Maple	\$195.75
4WCTM-21DM2-495-FL	Double 50 qt. for 21" Base Cabinet	19-1/2" (495 mm) W x 23-1/4" (591 mm) D x 17-3/4" (451 mm) H	White/Maple	\$180.65
4WCTM-27-4-597-FL	Quad 27 qt. for 27" Base Cabinet	23-1/2" (597 mm) W x 23-1/4" (591 mm) D x 17-3/4" (451 mm) H	White/Maple	\$224.60





4WCTM-1850DM2-419-FL

# U-SHAPED SOLID BOTTOM SHELVES

Our 5386 Pullout U-Shaped Shelves feature beautiful maple, gray or orion gray solid bottom shelves and glide on full-extension, 110 lb. rated slides with BLUMOTION soft-close slides. Designed for full access 33" and 36" sink base cabinets, these pullout shelves can be either side or bottom mounted and door mounted with included brackets.



Full-extension, 110 lb. rated, concealed slides with BLUMOTION soft-close



1 shelf included, 2 units shown  
5386-30BCSCFL-FOG



Door mounting brackets included



Solid bottom shelves in gray and maple with round wire or orion gray with flat wire



PRODUCT #	DESCRIPTION	PRODUCT DIMENSIONS	FINISH	SUGGESTED LIST PRICE
U-Shaped Solid Bottom Shelves w/ BLUMOTION Soft-Close				
5386-30BCSC-**	Shelf for 33" Sink Base Cabinet	29-11/16" (754 mm) - 32" (813 mm) W x 21-3/4" (551 mm) D x 5-1/4" (132 mm) H	Maple or Gray	\$450.25
5386-33BCSC-**	Shelf for 36" Sink Base Cabinet	32-11/16" (830 mm) - 35" (889 mm) W x 21-3/4" (551 mm) D x 5-1/4" (132 mm) H	Maple or Gray	\$461.95
5386-30BCSCFL-FOG	Shelf for 33" Sink Base Cabinet	29-11/16" (754 mm) - 32" (813 mm) W x 21-3/4" (551 mm) D x 5-3/4" (146 mm) H	Orion Gray	\$469.80
5386-33BCSCFL-FOG	Shelf for 36" Sink Base Cabinet	32-11/16" (830 mm) - 35" (889 mm) W x 21-3/4" (551 mm) D x 5-3/4" (146 mm) H	Orion Gray	\$483.70

\*\* select "MP" for Maple Shelf or "GR" for Gray Shelf



# WIRE UNDER SINK PULLOUT

With a reduced depth and height, our 5SB pullout is ideal for your under sink cabinets. Featuring a 15 L bin with a white lid for trash and an 8 L bin with a green lid for recyclables, this pullout glides on soft-close slides and includes built-in handles for easy removal.



Can be door mounted with our Door Mount Kit. (Sold Separately)



PRODUCT #	DESCRIPTION	PRODUCT DIMENSIONS	SUGGESTED LIST PRICE
Wire Under Sink Waste Container Pullout w/ Soft-Close			
5SBWC-815S-1	(1) 8 L and (1) 15 L	8-15/16" (227 mm) W x 18-5/8" (473 mm) D x 14-1/4" (362 mm) H	\$129.35

# SINK BASE WASTE & CLEANING PULLOUT

Small in size but large in functionality, our 5SBWCC pullout is ideal for full access under sink applications. Featuring an 8 L bin with a green lid and built-in handles, this pullout features soft-close slides, two 1 L spray bottles, and additional storage space.



Can be door mounted with our Door Mount Kit. (Sold Separately)



PRODUCT #	DESCRIPTION	PRODUCT DIMENSIONS	SUGGESTED LIST PRICE
Wire Under Sink Waste and Cleaning Pullout			
5SBWCC-8S-1	(1) 8 L Bin and (2) 1 L Bottles	8-15/16" (227 mm) W x 18-5/8" (473 mm) D x 14-1/4" (362 mm) H	\$118.30



# DRIP TRAYS

Your first line of defense against under sink cabinet water damage is with our Sink Base Drip Trays. The unique design forces excessive water to funnel out the front of your cabinet, alerting you of the leak. Trim-to-fit 27" to 40" sink base cabinets, this easy-to-clean insert is available in orion gray, metallic silver and almond. Recommended for new construction only.

SINK



PRODUCT #	DESCRIPTION	PRODUCT DIMENSIONS	FINISH	SUGGESTED LIST PRICE
Sink Base Drip Trays				
SBDT-2730-OG-1	Drip Tray	28-1/2" (727 mm) W x 23-1/4" (591 mm) D x 3/4" (19 mm) H	Orion Gray	\$60.75
SBDT-2730-A-1	Drip Tray	28-1/2" (724 mm) W x 23-1/4" (591 mm) D x 3/4" (19 mm) H	Almond	\$52.50
SBDT-2730-S-1	Drip Tray	28-1/2" (724 mm) W x 23-1/4" (591 mm) D x 3/4" (19 mm) H	Metallic Silver	\$57.85
SBDT-3336-OG-1	Drip Tray	34-1/2" (877 mm) W x 23-1/4" (591 mm) D x 3/4" (19 mm) H	Orion Gray	\$67.30
SBDT-3336-A-1	Drip Tray	34-1/2" (877 mm) W x 23-1/4" (591 mm) D x 3/4" (19 mm) H	Almond	\$58.45
SBDT-3336-S-1	Drip Tray	34-1/2" (877 mm) W x 23-1/4" (591 mm) D x 3/4" (19 mm) H	Metallic Silver	\$64.40
SBDT-3942-OG-1	Drip Tray	40-1/2" (1029 mm) W x 23-1/4" (591 mm) D x 3/4" (19 mm) H	Orion Gray	\$70.75
SBDT-3942-A-1	Drip Tray	40-1/2" (1029 mm) W x 23-1/4" (591 mm) D x 3/4" (19 mm) H	Almond	\$64.40
SBDT-3942-S-1	Drip Tray	40-1/2" (1029 mm) W x 23-1/4" (591 mm) D x 3/4" (19 mm) H	Metallic Silver	\$70.75

# TIERED BASE ORGANIZERS

Straight lines and modern appeal is the inspiration behind our 5322 Series. Designed for full access 9" and 12" base cabinets, these organizers feature maple, gray or orion gray solid bottoms and glide on full-extension, TANDEM, 110 lb. rated, concealed slides with BLUMOTION soft-close. Patented door mount brackets included (US Patent No. 8,047,621).



Full-extension TANDEM, 110 lb. rated slides with BLUMOTION soft-close



Patented door mount brackets (US Patent No. 8,047,621)



Solid bottom shelves in gray and maple with round wire or orion gray with flat wire



PRODUCT #	DESCRIPTION	PRODUCT DIMENSIONS	FINISH	SUGGESTED LIST PRICE
Tiered Base Organizers w/ BLUMOTION Soft-Close				
5322-BCSC-6-GR	Base Organizer for 9" Base Cabinet	7-1/4" (183 mm) W x 21-11/16" (551 mm) D x 24" (609 mm) H	Gray/Chrome	\$404.70
5322-BCSC-6-MP	Base Organizer for 9" Base Cabinet	7-1/4" (183 mm) W x 21-11/16" (551 mm) D x 24" (609 mm) H	Maple/Chrome	\$410.50
5322-BCSC-9-GR	Base Organizer for 12" Base Cabinet	10-1/4" (260 mm) W x 21-11/16" (551 mm) D x 24" (609 mm) H	Gray/Chrome	\$417.90
5322-BCSC-9-MP	Base Organizer for 12" Base Cabinet	10-1/4" (260 mm) W x 21-11/16" (551 mm) D x 24" (609 mm) H	Maple/Chrome	\$423.40
5322-BCSC-6-FOG	Base Organizer for 9" Base Cabinet	7-1/4" (183 mm) W x 21-11/16" (551 mm) D x 24" (609 mm) H	Orion Gray	\$445.45
5322-BCSC-9-FOG	Base Organizer for 12" Base Cabinet	10-1/4" (260 mm) W x 21-11/16" (551 mm) D x 24" (609 mm) H	Orion Gray	\$453.70



5322-BCSC-6-FOG

# KNIFE BLOCK AND UTENSIL BASE ORGANIZERS

Available for full access 9" and 12" base cabinets, the 5322KB series features maple, gray or orion gray solid bottoms that glide on full-extension, TANDEM, 110 lb. rated, concealed slides with BLUMOTION soft-close. Includes door mount brackets and features knife block with flex rod technology that adjust to securely hold knives and one 1.25 qt. removable stainless steel bin.



Knife block features flex rod technology that adjust to securely hold knives



Solid bottom shelves in gray and maple with round wire or orion gray with flat wire



PRODUCT #	DESCRIPTION	PRODUCT DIMENSIONS	FINISH	SUGGESTED LIST PRICE
Tiered Knife Block and Utensil Base Organizer w/ BLUMOTION Soft-Close				
5322KB-BCSC-6-GR	Knife Base Organizer for 9" Base Cabinet	7-1/4" (183 mm) W x 21-11/16" (551 mm) D x 24" (609 mm) H	Gray/Chrome	\$755.30
5322KB-BCSC-6-MP	Knife Base Organizer for 9" Base Cabinet	7-1/4" (183 mm) W x 21-11/16" (551 mm) D x 24" (609 mm) H	Maple/Chrome	\$760.95
5322KB-BCSC-9-GR	Knife Base Organizer for 12" Base Cabinet	10-1/4" (260 mm) W x 21-11/16" (551 mm) D x 24" (609 mm) H	Gray/Chrome	\$772.00
5322KB-BCSC-9-MP	Knife Base Organizer for 12" Base Cabinet	10-1/4" (260 mm) W x 21-11/16" (551 mm) D x 24" (609 mm) H	Maple/Chrome	\$777.50
5322KB-BCSC-6-FOG	Knife Base Organizer for 9" Base Cabinet	7-1/4" (183 mm) W x 21-11/16" (551 mm) D x 24" (609 mm) H	Orion Gray	\$604.35



# TIERED UTILITY BASE ORGANIZERS

Available for full access 9" base cabinets, the 5322UT series features maple, gray or orion gray solid bottoms that glide on full-extension, TANDEM, 110 lb. rated, concealed slides with BLUMOTION soft-close. Includes door mount brackets and three 1.25 qt. removable stainless steel bins.



5322UT-BCSC-6-FOG



Features (3) 1.25 qt. removable stainless steel bins



Solid bottom shelves in gray and maple with round wire or orion gray with flat wire



PRODUCT #	DESCRIPTION	PRODUCT DIMENSIONS	FINISH	SUGGESTED LIST PRICE
Tiered Utensil Base Organizer w/ BLUMOTION Soft-Close				
5322UT-BCSC-6-GR	Utensil Base Organizer for 9" Base Cabinet	7-1/4" (183 mm) W x 21-11/16" (551 mm) D x 24" (609 mm) H	Gray/Chrome	\$493.60
5322UT-BCSC-6-MP	Utensil Base Organizer for 9" Base Cabinet	7-1/4" (183 mm) W x 21-11/16" (551 mm) D x 24" (609 mm) H	Maple/Chrome	\$499.40
5322UT-BCSC-6-FOG	Utensil Base Organizer for 9" Base Cabinet	7-1/4" (183 mm) W x 21-11/16" (551 mm) D x 24" (609 mm) H	Orion Gray	\$506.80

# SOLID BOTTOM SHELVES

Designed for full access 15", 18", 24", and 36" base cabinets, the 5330 series features solid bottom shelves in maple or gray with chrome round wire, or orion gray with flat wire accents and glides on TANDEM, 110 lb. rated slides with BLUMOTION soft-close. Includes side, bottom and door mounting brackets for your specific installation preferences.



Full-extension, 110 lb. rated, concealed slides with BLUMOTION soft-close



Both side and bottom mounting brackets included



Door mounting brackets included



Solid bottom shelves in gray and maple with round wire or orion gray with flat wire



PRODUCT #	DESCRIPTION	PRODUCT DIMENSIONS	FINISH	SUGGESTED LIST PRICE
Solid Bottom Shelves w/BLUMOTION Soft-Close				
5330-12BCSC-**	Shelf for 15" Base Cabinet	11-11/16" (297 mm) W x 21-3/4" (551 mm) D x 5-5/8" (142 mm) H	Maple or Gray	\$386.45
5330-15BCSC-**	Shelf for 18" Base Cabinet	14-11/16"(373 mm) W x 21-3/4" (551 mm) D x 5-5/8" (142 mm) H	Maple or Gray	\$393.95
5330-21BCSC-**	Shelf for 24" Base Cabinet	20-11/16" (525 mm) W x 21-3/4" (551 mm) D x 5-5/8" (142 mm) H	Maple or Gray	\$408.60
5330-33BCSC-**	Shelf for 36" Base Cabinet	32-11/16" (830 mm) W x 21-3/4" (551 mm) D x 5-5/8" (142 mm) H	Maple or Gray	\$445.60
5330-33BCSCFL-FOG	Shelf for 36" Base Cabinet	32-11/16" (830 mm) W x 21-3/4" (551 mm) D x 5-3/4" (146 mm) H	Orion Gray	\$470.50

\*\* select "MP" for Maple Shelf or "GR" for Gray Shelf



1 shelf included, 2 units shown

5330-33BCSC-MP

# HEAVY DUTY MIXER LIFTS

Designed for full access 18" base cabinets, the ML series features a contemporary walnut shelf with orion gray soft-close hardware and built-in shock dampeners. Adjustable spring tensions allow the shelf to glide back into the cabinet gently and quietly. Also available without the shelf in orion gray or silver.



Built-in shock dampeners



Mixer lift kit designed for 18" base cabinets

PRODUCT #	DESCRIPTION	PRODUCT DIMENSIONS	FINISH	SUGGESTED LIST PRICE
Soft-Close Mixer Lift Kit w/ Shelf				
ML-WNHDSCOG-18FL	Soft-close Mixer Lift w/ Shelf	13-1/4" (337 mm) W x 20" (508 mm) D x 1-3/8" (35 mm) H	Orion Gray/Walnut	\$521.70
Soft-Close Mixer Lifts (No Shelf)				
RAS-ML-HDSCOG	Soft-close Mixer Lift		Orion Gray	\$287.10
RAS-ML-HDSC	Soft-close Mixer Lift		Silver Powder Coat	\$287.10
Mixer Lift (No Shelf)				
RAS-ML-HDCR	Mixer Lift		Silver Powder Coat	\$164.85





ML-WNHDSCOG-18FL

# BLUM SOFT-CLOSE BASE ORGANIZERS

Designed for full access 9" and 12" full height base cabinets, our new 448 pullout features a beautiful maple frame that glides on full-extension, 132 lb. rated slides with BLUMOTION soft-close and includes three storage shelves and patented door mount brackets (US Patent No. 8,388,076).



Full-extension slides with BLUMOTION soft-close



Patented door mount brackets provide 5" of adjustability  
(US Patent No. 8,388,076)



PRODUCT #		DESCRIPTION	PRODUCT DIMENSIONS	SUGGESTED LIST PRICE
Base Organizer w/ BLUMOTION Soft-Close				
448-BCSC-6C	Organizer for 9" Base Cabinet	7-1/4" (184 mm) W x 21-5/8" (549 mm) D x 25-1/2"- 29-1/2" (648-749 mm) H		\$326.25
448-BCSC-9C	Organizer for 12" Base Cabinet	10-1/4" (260 mm) W x 21-5/8" (549 mm) D x 25-1/2"- 29-1/2" (648-749 mm) H		\$383.65



448-BCSC-9C

# GLIDWARE PULLOUTS

Glideware is a revolutionary organizing pullout that allows you to securely hang your accessories inside your cabinet and bring them out when you need them. Designed for 14" to 22" cabinet depths, the patent-pending Glideware Pullouts feature up to seven adjustable hooks, solid wood construction in either maple or gray, and three slide configurations: full-extension, ball-bearing, 100 lb. rated slides; full-extension, 110 lb. rated, concealed slides with BLUMOTION soft-close; or stainless steel full-extension, ball-bearing, 100 lb. rated slides.



Available with or without soft-close



Adjustable hooks in a variety of shapes and colors



Soft-close available in gray or maple

PRODUCT #	DESCRIPTION	PRODUCT DIMENSIONS	FINISH	SUGGESTED LIST PRICE
Glideware Pullout w/ (7) Hooks				
GLD-W14-SC-5	Glideware for 14" Cabinet Depths	4" (102 mm) W x 14-3/4" (374 mm) D x 4-1/8" (105 mm) H	Maple	\$386.45
GLD-W22-SC-7	Glideware for 22" Cabinet Depths	4" (102 mm) W x 22-3/4" (578 mm) D x 4-1/8" (105 mm) H	Maple	\$393.95
Glideware Pullout w/ BLUMOTION Soft-Close and (5) Hooks				
GLD-W14-BC-5	Glideware for 14" Cabinet Depths	6" (153 mm) W x 14-3/4" (374 mm) D x 5-1/16" (128 mm) H	Maple	\$445.60
GLD-W16-BC-5	Glideware for 16" Cabinet Depths	6" (153 mm) W x 16-3/4" (425 mm) D x 5-1/16" (128 mm) H	Maple	\$470.50
GLD-W22-BC-7	Glideware for 22" Cabinet Depths	6" (153 mm) W x 22-3/4" (578 mm) D x 5-1/16" (128 mm) H	Maple	\$408.60
GLD-W22-BG-7	Glideware for 22" Cabinet Depths	6" (153 mm) W x 22-3/4" (578 mm) D x 5-1/16" (128 mm) H	Gray	\$445.60
Outdoor Polymer Glideware Pullout w/ Stainless Steel Slides and (5) Hooks				
GLD-P22-SSW-5	Glideware for 22" Cabinet Depths	4-1/4" (108 mm) W x 22-3/4" (578 mm) D x 5-1/8" (130 mm) H	White	\$408.60
Glideware Accessories				
GLD-HK-S-ZC-7	(7) Glideware Short Hooks	1" (25 mm) W x 1-1/2" (38 mm) x 3-1/8" (80 mm) H	Zinc	\$470.50
GLD-HK-S-**-7	(7) Glideware Short Hooks	1" (25 mm) W x 1-1/2" (38 mm) x 3-1/8" (80 mm) H		\$408.60
GLD-HK-L-ZC-7	(7) Glideware Long Hooks	1" (25 mm) W x 1-1/2" (38 mm) x 4" (102 mm) H	Zinc	\$445.60
GLD-HK-L-**-7	(7) Glideware Long Hooks	1" (25 mm) W x 1-1/2" (38 mm) x 4" (102 mm) H		\$470.50
GLD-HK-2-ZC-5	(5) Glideware Back-to-Back Hooks	1" (25 mm) W x 24-3/64" (68 mm) x 3-1/8" (80 mm)	Zinc	\$445.60
GLD-HK-2-**-5	(5) Glideware Back-to-Back Hooks	1" (25 mm) W x 24-3/64" (68 mm) x 3-1/8" (80 mm)		\$445.60

\*\* select "BL" for Black, BR for Brass, BZ for Bronze, CP for Copper, NC for Nickel





GLD-W14-BC-5

# THE CLOUD BLIND CORNERS

Blind corner cabinets don't have to be wasted space and lost items. Available in three sizes with single and double configurations, the Cloud fits into nearly all blind corner applications and features maple or gray solid bottom shelves with chrome accents or orion gray solid bottom with flat wire accents.



Available in single and double shelves



Mounted telescopic post system included with double unit



Solid bottom shelves in gray and maple with round wire or orion gray with flat wire

PRODUCT #	DESCRIPTION	PRODUCT DIMENSIONS	SUGGESTED LIST PRICE		
"The Cloud" Single Blind Corner					
For Left Door/Blind Right Cabinets			MAPLE	GRAY	ORION GRAY
5371-15-**-R	Single for 15" Cabinet Opening	33" (838 mm) W x 21-7/8" (556 mm) D x 6-1/2" (165 mm) H	\$253.30	\$248.40	\$288.40
5371-18-**-R	Single for 18" Cabinet Opening	37-5/8" (956 mm) W x 21-9/16" (548 mm) D x 6-1/2" (165 mm) H	\$260.30	\$255.35	\$295.20
5371-21-**-R	Single for 21" Cabinet Opening	39" (991 mm) W x 21-3/4" (553 mm) D x 6-1/2" (165 mm) H	\$261.60	\$256.65	\$297.25
For Left Door/Blind Right Cabinets					
5371-15-**-L	Single for 15" Cabinet Opening	33" (838 mm) W x 21-7/8" (556 mm) D x 6-1/2" (165 mm) H	\$253.30	\$248.40	\$288.40
5371-18-**-L	Single for 18" Cabinet Opening	37-5/8" (956 mm) W x 21-9/16" (548 mm) D x 6-1/2" (165 mm) H	\$260.30	\$255.35	\$295.20
5371-21-**-L	Single for 21" Cabinet Opening	39" (991 mm) W x 21-3/4" (553 mm) D x 6-1/2" (165 mm) H	\$261.60	\$256.65	\$297.25

\*\* select "MP" for Maple Shelf , "GR" for Gray Shelf or "FOG" for Orion Gray

PRODUCT #	DESCRIPTION	PRODUCT DIMENSIONS	SUGGESTED LIST PRICE		
"The Cloud" Double Blind Corner					
For Left Door/Blind Right Cabinets			MAPLE	GRAY	ORION GRAY
5372-15-**-R	Double for 15" Cabinet Opening	33" (838 mm) W x 21-7/8" (556 mm) D x 24-1/2" (622 mm) H	\$655.85	\$645.70	\$683.25
5372-18-**-R	Double for 18" Cabinet Opening	37-5/8" (956 mm) W x 21-9/16" (548 mm) D x 24-1/2" (622 mm) H	\$669.60	\$659.60	\$704.00
5372-21-**-R	Double for 21" Cabinet Opening	39" (991 mm) W x 21-3/4" (553 mm) D x 24-1/2" (622 mm) H	\$672.35	\$662.50	\$708.45
For Left Door/Blind Right Cabinets					
5372-15-**-L	Double for 15" Cabinet Opening	33" (838 mm) W x 21-7/8" (556 mm) D x 24-1/2" (622 mm) H	\$655.85	\$645.70	\$683.25
5372-18-**-L	Double for 18" Cabinet Opening	37-5/8" (956 mm) W x 21-9/16" (548 mm) D x 24-1/2" (622 mm) H	\$669.60	\$659.60	\$704.00
5372-21-**-L	Double for 21" Cabinet Opening	39" (991 mm) W x 21-3/4" (553 mm) D x 24-1/2" (622 mm) H	\$672.35	\$662.50	\$708.45

\*\* select "MP" for Maple Shelf , "GR" for Gray Shelf or "FOG" for Orion Gray



5372-18-GR-L

# SOLID BOTTOM BLIND CORNER OPTIMIZERS

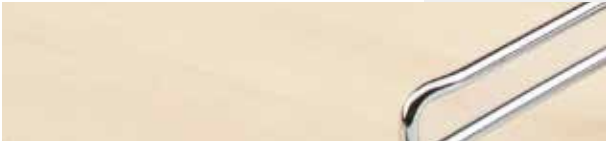
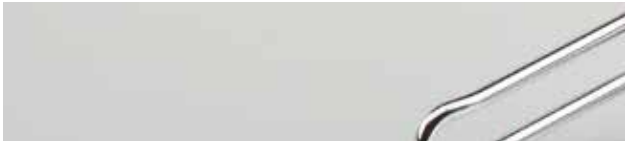
Maximize your blind corner and make deep recesses more accessible with our Blind Corner Optimizers. Designed for 15" and 18" cabinet openings, the 53PSP series features six solid bottom shelves in maple or gray, a non-handed blind left or right design and soft-close slides.



Two- or three-tier solid bottom shelves



Soft-close



Solid bottom shelves in gray or maple

PRODUCT #	DESCRIPTION	PRODUCT DIMENSIONS	FINISH	SUGGESTED LIST PRICE
Two-Tier Solid Bottom Blind Corner Optimizer - Non-Handed w/ Soft-Close				
53PSP-15SC-MP	Two-Tier Optimizer for 15" Opening	26-1/4" (667 mm) W x 20-1/4" (514 mm) D x 21" (533 mm) H	Maple/Chrome	\$739.50
53PSP-15SC-GR	Two-Tier Optimizer for 15" Opening	26-1/4" (667 mm) W x 20-1/4" (514 mm) D x 21" (533 mm) H	Gray/Chrome	\$725.00
53PSP-18SC-MP	Two-Tier Optimizer for 18" Opening	32-1/4" (819 mm) W x 20-1/4" (514 mm) D x 21" (533 mm) H	Maple/Chrome	\$783.00
53PSP-18SC-GR	Two-Tier Optimizer for 18" Opening	32-1/4" (819 mm) W x 20-1/4" (514 mm) D x 21" (533 mm) H	Gray/Chrome	\$771.40
Three-Tier Solid Bottom Blind Corner Optimizer - Non-Handed w/ Soft-Close				
53PSP3-15SC-MP	Three-Tier Optimizer for 15" Opening	26-1/4" (667 mm) W x 20-1/4" (514 mm) D x 24" (533 mm) H	Maple/Chrome	\$947.15
53PSP3-15SC-GR	Three-Tier Optimizer for 15" Opening	26-1/4" (667 mm) W x 20-1/4" (514 mm) D x 24" (533 mm) H	Gray/Chrome	\$929.60
53PSP3-18SC-MP	Three-Tier Optimizer for 18" Opening	32-1/4" (819 mm) W x 20-1/4" (514 mm) D x 24" (533 mm) H	Maple/Chrome	\$1,006.45
53PSP3-18SC-GR	Three-Tier Optimizer for 18" Opening	32-1/4" (819 mm) W x 20-1/4" (514 mm) D x 24" (533 mm) H	Gray/Chrome	\$989.05





53PSP3-18SC-MP

# WALNUT TWO-TIER BLIND CORNER ORGANIZERS

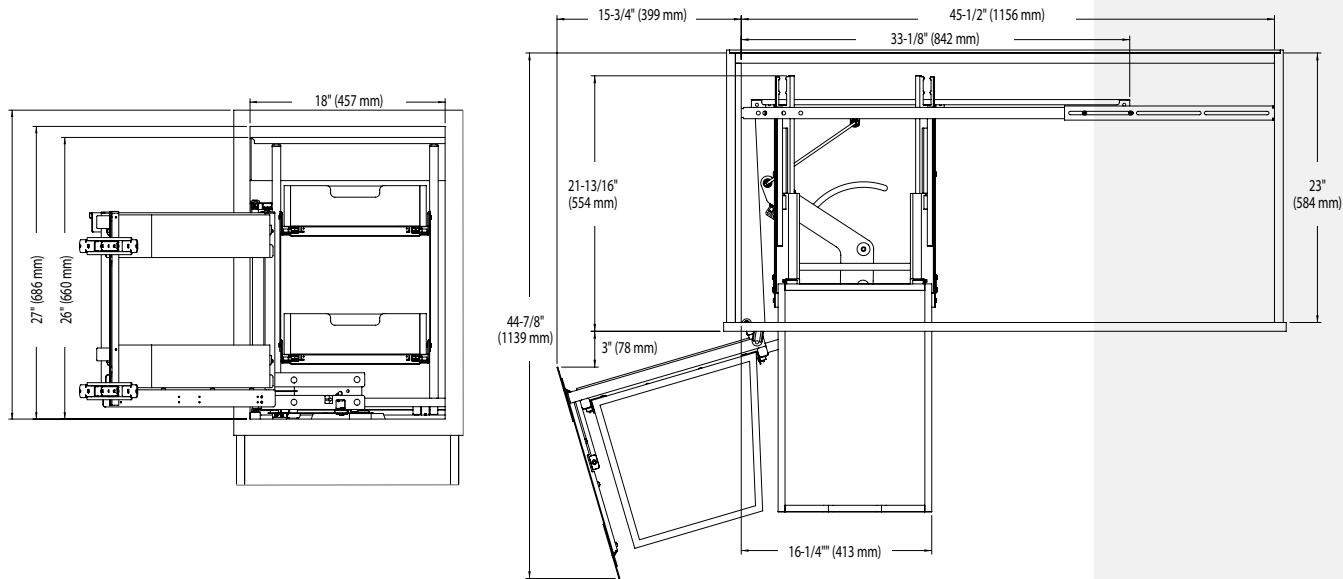
Optimize your blind corner cabinets with our new 499 Series! Designed for 18" blind corner cabinet openings, this two-tier organizer features a contemporary orion gray frame with walnut dovetail drawers that glides on full-extension, TANDEM, 110 lb. rated slides with BLUMOTION soft-close and is perfect for storing specialty cookware and small appliances.



Available for blind left or blind right corner cabinets



Walnut dovetail construction with satin finish



PRODUCT #	DESCRIPTION	PRODUCT DIMENSIONS	SUGGESTED LIST PRICE
Walnut Two-Tier Blind Corner Organizers w/ BLUMOTION Soft-Close			
499-18-RWN	Right Door Mount Organizer for 18" Blind Left Corner Cabinets	33-3/16" (842 mm) W x 21-13/16" (554 mm) D x 26" (660 mm) H	\$1667.50
499-18-LWN	Left Door Mount Organizer for 18" Blind Right Corner Cabinets	33-3/16" (842 mm) W x 21-13/16" (554 mm) D x 26" (660 mm) H	\$1667.50



499-18-RWN

# FLAT WIRE SWING OUT PANTRIES

Jazz up your kitchen with our Swing Out Pantry. Designed for full access 18" and 24" width pantry cabinets (minimum opening height 74"), the 5374 Series features five orion gray solid bottom shelves with flat wire accents that glide out as the door opens.



(2) door mounting brackets



Orion gray shelves with flat wire accents

PRODUCT #	DESCRIPTION	PRODUCT DIMENSIONS	SUGGESTED LIST PRICE
Flat Wire Swing Out Pantries			
5374-18FL-FOG	Pantry for 18" Cabinet	14-1/4" (360 mm) W x 18-1/2" (470 mm) D x 74-1/16" (1881 mm) H	\$1,171.60
5374-24FL-FOG	Pantry for 24" Cabinet	22-1/16" (560 mm) W x 18-1/2" (470 mm) D x 74-1/16" (1881 mm) H	\$1,221.90



TALL



5374-24FL-FOG

# SOFT-CLOSE SOLID BOTTOM PULLOUT PANTRIES

Our 5300 Pullout Pantry Series is the answer to your full access cabinetry needs. The series features full depth shelves for 24" deep cabinetry and comes in five different widths and four height ranges. Available in maple or gray solid bottoms, the 5300 Series glides quietly on a full-extension, 250 lb. rated, soft-close slide system and features micro-adjustable door mounting. All kits are packaged with frame, baskets and hardware.



Micro-adjustment door mounting brackets



Full-extension slides with soft-close, 250 lb. rated



Solid bottom shelves in gray or maple

PRODUCT #	DESCRIPTION	BASKET WIDTH	CABINET OPENING WIDTH (MIN)	PRODUCT DEPTH	HEIGHT (MIN)	HEIGHT (MAX)	SUGGESTED LIST PRICE
Solid Bottom Pullout Pantries							
5343-08-**-**	4 Shelves/2 Door Mount Brackets	8" (203 mm)	8-1/2" (216 mm)	21-11/16" (550 mm)	43-13/32" (1102 mm)	50-3/4" (1289 mm)	\$1,066.05
5343-10-**-**	4 Shelves/2 Door Mount Brackets	10" (254 mm)	10-1/2" (268 mm)	21-11/16" (550 mm)	43-13/32" (1102 mm)	50-3/4" (1289 mm)	\$1,100.40
5343-13-**-**	4 Shelves/2 Door Mount Brackets	13" (330 mm)	13-1/2" (343 mm)	21-11/16" (550 mm)	43-13/32" (1102 mm)	50-3/4" (1289 mm)	\$1,109.70
5343-16-**-**	4 Shelves/2 Door Mount Brackets	16" (406 mm)	16-1/2" (419 mm)	21-11/16" (550 mm)	43-13/32" (1102 mm)	50-3/4" (1289 mm)	\$1,199.00
5343-19-**-**	4 Shelves/2 Door Mount Brackets	19" (482 mm)	19-1/2" (495 mm)	21-11/16" (550 mm)	43-13/32" (1102 mm)	50-3/4" (1289 mm)	\$1,212.50
5350-08-**-**	4 Shelves/2 Door Mount Brackets	8" (203 mm)	8-1/2" (216 mm)	21-11/16" (550 mm)	50-3/4" (1289 mm)	58-9/32" (1480 mm)	\$1,052.10
5350-10-**-**	4 Shelves/2 Door Mount Brackets	10" (254 mm)	10-1/2" (268 mm)	21-11/16" (550 mm)	50-3/4" (1289 mm)	58-9/32" (1480 mm)	\$1,085.75
5350-13-**-**	4 Shelves/2 Door Mount Brackets	13" (330 mm)	13-1/2" (343 mm)	21-11/16" (550 mm)	50-3/4" (1289 mm)	58-9/32" (1480 mm)	\$1,094.75
5350-16-**-**	4 Shelves/2 Door Mount Brackets	16" (406 mm)	16-1/2" (419 mm)	21-11/16" (550 mm)	50-3/4" (1289 mm)	58-9/32" (1480 mm)	\$1,182.50
5350-19-**-**	4 Shelves/2 Door Mount Brackets	19" (482 mm)	19-1/2" (495 mm)	21-11/16" (550 mm)	50-3/4" (1289 mm)	58-9/32" (1480 mm)	\$1,195.65
5358-08-**-**	5 Shelves/3 Door Mount Brackets	8" (203 mm)	8-1/2" (216 mm)	21-11/16" (550 mm)	58-1/4" (1480 mm)	65-3/4" (1670 mm)	\$1,168.55
5358-10-**-**	5 Shelves/3 Door Mount Brackets	10" (254 mm)	10-1/2" (268 mm)	21-11/16" (550 mm)	58-1/4" (1480 mm)	65-3/4" (1670 mm)	\$1,210.15
5358-13-**-**	5 Shelves/3 Door Mount Brackets	13" (330 mm)	13-1/2" (343 mm)	21-11/16" (550 mm)	58-1/4" (1480 mm)	65-3/4" (1670 mm)	\$1,221.05
5358-16-**-**	5 Shelves/3 Door Mount Brackets	16" (406 mm)	16-1/2" (419 mm)	21-11/16" (550 mm)	58-1/4" (1480 mm)	65-3/4" (1670 mm)	\$1,329.80
5358-19-**-**	5 Shelves/3 Door Mount Brackets	19" (482 mm)	19-1/2" (495 mm)	21-11/16" (550 mm)	58-1/4" (1480 mm)	65-3/4" (1670 mm)	\$1,345.45
5373-08-**-**	6 Shelves/4 Door Mount Brackets	8" (203 mm)	8-1/2" (216 mm)	21-11/16" (550 mm)	73-5/8" (1870 mm)	80-3/4" (2051 mm)	\$1,320.35
5373-10-**-**	6 Shelves/4 Door Mount Brackets	10" (254 mm)	10-1/2" (268 mm)	21-11/16" (550 mm)	73-5/8" (1870 mm)	80-3/4" (2051 mm)	\$1,371.55
5373-13-**-**	6 Shelves/4 Door Mount Brackets	13" (330 mm)	13-1/2" (343 mm)	21-11/16" (550 mm)	73-5/8" (1870 mm)	80-3/4" (2051 mm)	\$1,386.05
5373-16-**-**	6 Shelves/4 Door Mount Brackets	16" (406 mm)	16-1/2" (419 mm)	21-11/16" (550 mm)	73-5/8" (1870 mm)	80-3/4" (2051 mm)	\$1,518.90
5373-19-**-**	6 Shelves/4 Door Mount Brackets	19" (482 mm)	19-1/2" (495 mm)	21-11/16" (550 mm)	73-5/8" (1870 mm)	80-3/4" (2051 mm)	\$1,540.50

\*\* select "MP" for Maple Shelf or "GR" for Gray Shelf



5373-13-MP

# TIERED DRAWERS

## CUTLERY

Designed for full access 15", 18", 21", and 24" base cabinet drawers, the 4WTCD Tiered Cutlery Drawer features maple construction, BLUMOTION soft-close slides and door mounting brackets. Up to seven drawer compartments paired with up to seven sliding top tray compartments means double the storage capacity in one easy-to-install complete drawer system.

## COMBINATION

Enjoy ample storage space for your kitchen essentials with the 4WTCD Series complete drawer system. Designed for full access 30" and 36" base cabinet drawers, this solid maple drawer with BLUMOTION soft-close slides features two levels of storage compartments, door mounting brackets and built-in knife organizer and foil wrap dispenser.



Complete drawer system, just add your drawer front



Combination drawer features up to (6) compartments and built-in knife organizer



PRODUCT #	DESCRIPTION	PRODUCT DIMENSIONS	SUGGESTED LIST PRICE
Tiered Cutlery Drawers w/ BLUMOTION Soft-Close			
4WTCD-343FLSC-1	Tiered Drawer for 15" Cabinet	13-1/2" (343 mm) W x 21-11/16" (551 mm) D x 4-1/4" (108 mm) H	\$209.65
4WTCD-419FLSC-1	Tiered Drawer for 18" Cabinet	16-1/2" (419 mm) W x 21-11/16" (551 mm) D x 4-1/4" (108 mm) H	\$228.95
4WTCD-495FLSC-1	Tiered Drawer for 21" Cabinet	19-1/2" (495 mm) W x 21-11/16" (551 mm) D x 4-1/4" (108 mm) H	\$234.05
4WTCD-572FLSC-1	Tiered Drawer for 24" Cabinet	22-1/2" (572 mm) W x 21-11/16" (551 mm) D x 4-1/4" (108 mm) H	\$268.10
Tiered Combination Drawers w/ BLUMOTION Soft-Close			
4WTCD-724FLSC-1	Tiered Drawer for 30" Cabinet	28-1/2" (724 mm) W x 22-3/16" (564 mm) D x 4-7/16" (112 mm) H	\$422.40
4WTCD-876FLSC-1	Tiered Drawer for 36" Cabinet	34-1/2" (837 mm) W x 22-3/16" (564 mm) D x 4-7/16" (112 mm) H	\$461.55





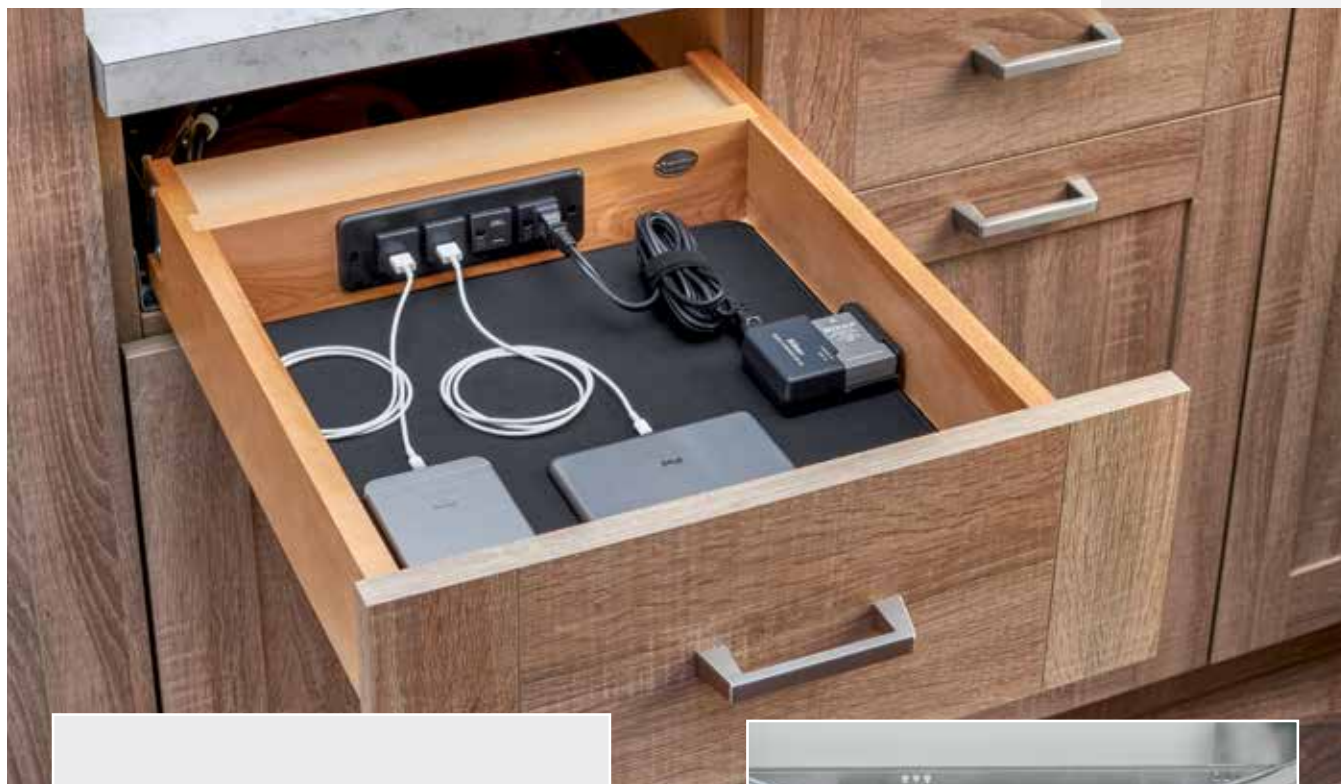
4WTCD-876FLSC-1



Recommended as a complete assembly.

# CHARGING DRAWER

Charge all your electronics together in one complete drawer system with our 4WCDB Series Charging Drawer. Featuring maple construction with shock absorbent mat and BLUMOTION soft-close slides, this easy-to-install unit is designed for full access 18" base cabinet drawers and boasts an integrated cord guide to ensure safe operation and an in-drawer receptacle with two 120V plugs and 2.1 amp USB ports.



Complete drawer system, just add your drawer front, CUL US recommended to US962a and CSA-C22.2



Integrated cord guide to ensure safe operation mounts to cabinet side and rear wall



PRODUCT #	DESCRIPTION	PRODUCT DIMENSIONS	SUGGESTED LIST PRICE
4WCDB-18FLSC-1	Charging Drawer for 18" Cabinet	16-1/2" (419 mm) W x 21" (533 mm) D x 4-1/2" (114 mm) H	\$445.60

# WALNUT DOUBLE KNIFE BLOCK INSERT

Keep your knives organized and within reach with this trimmable knife block insert constructed of solid walnut with a satin finish. Designed for full access drawers with up to 18-1/2" inner width, or larger drawers in combination with other cutlery and utensil inserts. It comes out of the box ready to use with two rows of slots and a unique handle rest that keeps knives straight and provides ample finger space for easy removal. In total, it features an amazing 55 slots to store multiple size knives and has a separate compartment for other utensils.

DRAWER



PRODUCT #	DESCRIPTION	PRODUCT DIMENSIONS	SUGGESTED LIST PRICE
Walnut Double Knife Block Insert			
4WDKB-WN-1	Insert for 18" Or Smaller Drawers	18-1/2" (470 mm) W x 22" (559 mm) D x 2" (51 mm) H	\$255.05



# WALNUT SPICE DRAWER INSERTS

Our popular 4SDI Spice Drawer Inserts are now available in beautiful walnut! Designed for 24" or smaller base cabinet drawers, this trim-to-fit insert features walnut construction with a satin finish, one rear storage compartment and up to three tiers for all your spices. Combine with our 4WD Wood Dividers or use individually to fit your exact organizational needs.



PRODUCT #	DESCRIPTION	PRODUCT DIMENSIONS	SUGGESTED LIST PRICE
Walnut Spice Drawer Inserts			
4SDI-WN-18-1	Insert for 18" Or Smaller Drawers	16" (406 mm) W x 19-3/4" (502 mm) D x 1-1/2" (38 mm) H	\$78.15
4SDI-WN-24-1	Insert for 24" Or Smaller Drawers	22" (559 mm) W x 19-3/4" (502 mm) D x 1-1/2" (38 mm) H	\$101.35



# WALNUT DRAWER PEG SYSTEMS

From dinner plates to plastic containers, your kitchen items are easily accessible and always organized with our versatile pegboard system designed for full access cabinetry. Constructed from a beautiful walnut with a satin finish, the 4DPS-WN Series includes press-in pegs and is available in three trim-to-fit sizes.

DRAWER



PRODUCT #	DESCRIPTION	PRODUCT DIMENSIONS	SUGGESTED LIST PRICE
Walnut Drawer Peg System w/ Pegs			
4DPS-WN-2421	Small Walnut Drawer Peg System (9 Pegs)	24-1/4" (616 mm) W x 22-1/4" (540 mm) D x 6-5/8" (168 mm) H	\$181.10
4DPS-WN-3021	Medium Walnut Drawer Peg System (12 Pegs)	30-1/4" (769 mm) W x 22-1/4" (540 mm) D x 6-5/8" (168 mm) H	\$233.45
4DPS-WN-3921	Large Walnut Drawer Peg System (16 Pegs)	39-1/4" (997 mm) W x 22-1/4" (540 mm) D x 6-5/8" (168 mm) H	\$304.80
4DPS-PEG-WN-4	Walnut Pegs (4 Pack)	1-5/8" (41 mm) W x 1-5/8" (41 mm) D x 6-5/8" (168 mm) H	\$52.05

# WALNUT UTENSIL TRAY INSERTS

The 4WUT-WN Series is our answer to organizing your larger kitchen utensils. Designed with wider storage cavities and made of walnut construction with a satin finish, the series features simple drop-in installation and two shallow depth trim-to-fit sizes to accommodate any full access kitchen cabinet.



PRODUCT #	DESCRIPTION	PRODUCT DIMENSIONS	SUGGESTED LIST PRICE
Walnut Shallow Height Utensil Trays			
4WUT-WN-1SH	Insert for 18" or Smaller Drawers	15-1/8" (384 mm) W x 22" (559 mm) D x 2-3/8" (60 mm) H	\$86.70
4WUT-WN-3SH	Insert for 24" or Smaller Drawers	21-1/8" (537 mm) W x 22" (559 mm) D x 2-3/8" (60 mm) H	\$117.45
PRODUCT #	DESCRIPTION	PRODUCT DIMENSIONS	SUGGESTED LIST PRICE
Walnut Shallow Height Divider			
4WD-22SH-WN-1	Divider	1/2" (13 mm) W x 22" (559 mm) D x 2-3/8" (60 mm) H	\$19.00



# WALNUT CUTLERY TRAY INSERTS

Designed to bring organization to your cutlery drawer, the 4WCT-WN Series is made of beautiful walnut with a satin finish. The series features simple drop-in installation and two shallow depth trim-to-fit sizes to accommodate any full access kitchen cabinet.

DRAWER



PRODUCT #	DESCRIPTION	PRODUCT DIMENSIONS	SUGGESTED LIST PRICE
Walnut Shallow Height Cutlery Trays			
4WCT-WN-1SH	Insert for 18" or Smaller Drawers	15-1/8" (384 mm) W x 22" (559 mm) D x 2-3/8" (60 mm) H	\$91.80
4WCT-WN-3SH	Insert for 24" or Smaller Drawers	21-1/8" (537 mm) W x 22" (559 mm) D x 2-3/8" (60 mm) H	\$124.10

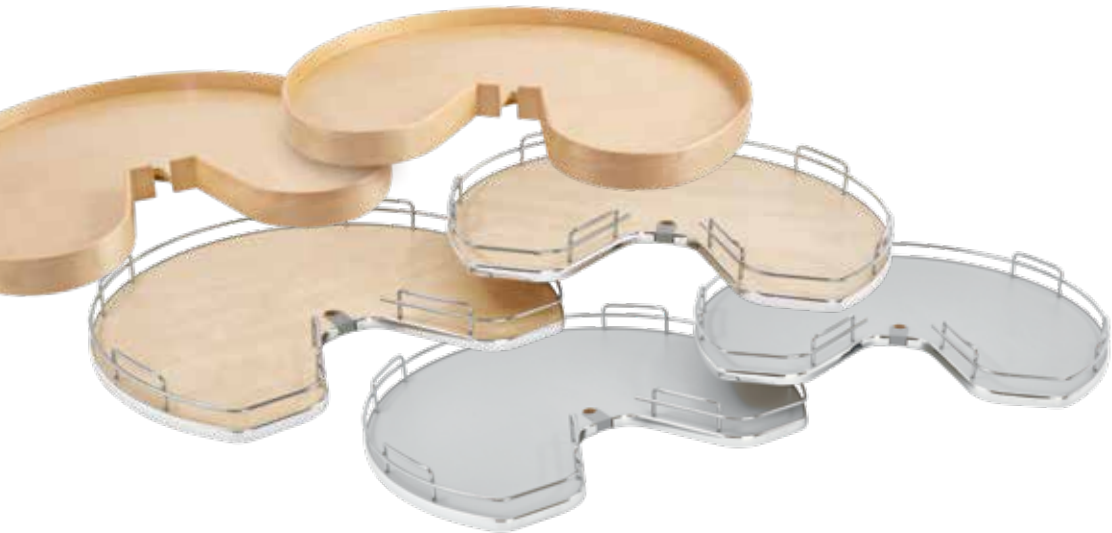
# COLLAPSIBLE CORNER LAZY SUSANS

Our Collapsible Corner Lazy Susan features an internal door-collapse mechanism to protect fingers from injury, rotational soft-stop and soft-close door hardware to ensure a snug fit and provide the perfect solution for your 90-degree corner cabinet needs.



PRODUCT #	DESCRIPTION	PRODUCT DIMENSIONS	SUGGESTED LIST PRICE
Collapsible Corner Lazy Susan			
LD-CC-810-11-1	(2) 32" White Polymer Shelves	32" (813 mm) Diameter	\$194.30
CCLS-FL-HDW	White Hardware for Full Access Cabinets	15" (381 mm) W x 15-1/4" (387 mm) D x 25"-35" (635 mm - 889 mm) H	\$339.90

*You must order the hardware and trays separately. White hardware only works with white trays.*



PRODUCT #	DESCRIPTION	PRODUCT DIMENSIONS	SUGGESTED LIST PRICE
Collapsible Corner Lazy Susan			
LD-4NW-CC-810-1	(2) 32" Natural Wood Shelves	32" (813 mm) Diameter	\$318.70
53-CC-810-MP-1	(2) 32" Maple Shelves	32" (813 mm) Diameter	\$312.50
53-CC-810-GR-1	(2) 32" Gray Shelves	32" (813 mm) Diameter	\$312.50
53-CCLS-FL-HDW-GR*	Gray Hardware for Full Access Cabinets	15" (381 mm) W x 15-1/4" (387 mm) D x 25"-35" (635 mm - 889 mm) H	\$361.80

*You must order the hardware and trays separately. Gray hardware work with Natural Wood, Maple, and Gray trays only.*



# NOT-SO-LAZY SUSAN

Maximize storage in your corner cabinets with our Not-So-Lazy Susan Organizer. Featuring solid wood construction and designed for 33" and 36" corner base cabinets, this kidney-shaped storage unit features a lower storage shelf and an upper organizer with up to seven adjustable hooks and a mid-level arrester to protect cookware and maintain unit stability while in use. Extend the life of your cookware with the Not-So-Lazy Susan Organizer.



patent-pending

NSLS-KM-28-7



Mid-level arrester



(7) adjustable hooks

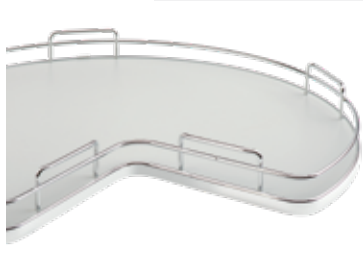
PRODUCT #	DESCRIPTION	PRODUCT DIMENSIONS	SUGGESTED LIST PRICE
Not-So-Lazy Susan Organizers			
NSLS-KM-28-7	Organizer for 33" Corner Base Cabinet	28" (711 mm) Diameter	\$478.50
NSLS-KM-32-7	Organizer for 36" Corner Base Cabinet	32" (813 mm) Diameter	\$495.90

# SOLID BOTTOM KIDNEY-SHAPED LAZY SUSANS

Maximize your corner cabinet space with our Kidney-Shaped Lazy Susans. Available in single or double sets, these Lazy Susans feature solid bottom shelves in beautiful maple, gray or orion gray finishes and include either aluminum swivel bearings or chrome-plated telescoping shafts with independently rotating hardware.



Solid bottom shelves in gray and maple with round wire or orion gray with flat wire



Single and double shelves available

PRODUCT #	DESCRIPTION	PRODUCT DIMENSIONS	FINISH	SUGGESTED LIST PRICE
Single Solid Bottom Kidney-Shaped Lazy Susans w/ Aluminum Bearing for 32" Kidney Cabinets				
53-401-32BSGR-1	Lazy Susan for 32" Corner Base Cabinet	32" (813 mm) Diameter	Gray	\$200.85
53-401-32BSMP-1	Lazy Susan for 32" Corner Base Cabinet	32" (813 mm) Diameter	Maple	\$200.85
53-401-32BSFOG-1	Lazy Susan for 32" Corner Base Cabinet	32" (813 mm) Diameter	Orion Gray	\$212.85
Double Solid Bottom Kidney-Shaped Lazy Susans w/ Telescoping Shaft				
53472-32GR-1	Lazy Susan for 32" Corner Base Cabinet	32" (813 mm) Diameter	Gray	\$339.60
53472-32MP-1	Lazy Susan for 32" Corner Base Cabinet	32" (813 mm) Diameter	Maple	\$339.60
53472-32FOG-1	Lazy Susan for 32" Corner Base Cabinet	32" (813 mm) Diameter	Orion Gray	\$369.30



## LED LIGHTING

Enhance the appearance and functionality of your home with energy efficient, long-lasting LED fixtures from Tresco Lighting by Rev-A-Shelf®, the innovative leader in cabinet lighting for over 25 years. We offer a wide array of puck, flexible, and linear lighting solutions along with a collection of controllers and dimmers.

Our full line of Tresco concealed under and in-cabinet lights will brighten and beautify your home by illuminating cabinet interiors, work spaces, and even flooring.

## LIGHTING LAYOUT SERVICES

Let our Lighting Layout Assistance Program guide you in specifying the ideal product and wiring schematic for your next residential or commercial project. Get started today:  
[trescolighting.com/layout](http://trescolighting.com/layout)



[www.trescolighting.com](http://www.trescolighting.com)



12400 Earl Jones Way  
Louisville, KY 40299  
800.626.1126 | [rev-a-shelf.com](http://rev-a-shelf.com)